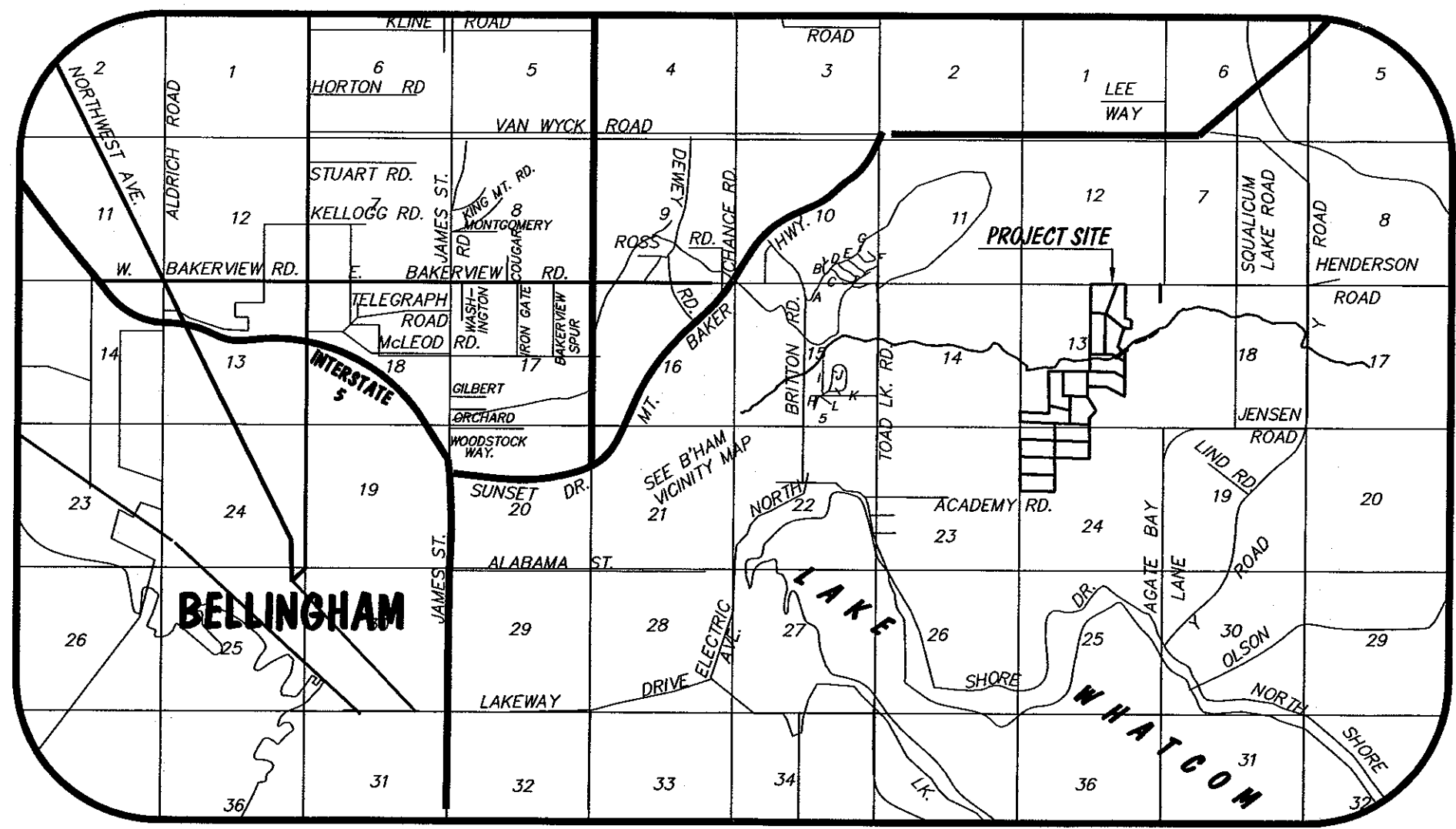




VINEYARD DEVELOPMENT

SITUATE IN A PORTION OF THE NE 1/4 OF SECTION 23, THE NW1/4 OF SECTION 24, THE SW 1/4, SE 1/4 AND NE 1/4 OF SECTION 13, TOWNSHIP 38 NORTH, RANGE 3 EAST, AND THE NW 1/4 AND SW 1/4 OF SECTION 18, TOWNSHIP 38 NORTH, RANGE 4 EAST, W.M., WHATCOM COUNTY, WASHINGTON

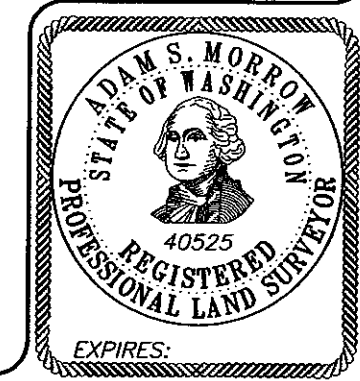
PACIFIC SURVEY & ENGINEERING INC
1812 CORNWALL AVE, BELLINGHAM, WA 98225 PHONE: 671.7387 FAX: 671.4685
EMAIL: pse@pseurvey.com www.pseurvey.com



VICINITY MAP - N.T.S.

FIGURE _ OF _
PSE PROJECT: 2005230
DWG: WETLAND_base.dwg
DRAWN: JVD DATE: 5/6/08
PROJECT LATITUDE: N 48°46'41.31" LONGITUDE: W 122°22'04.19"

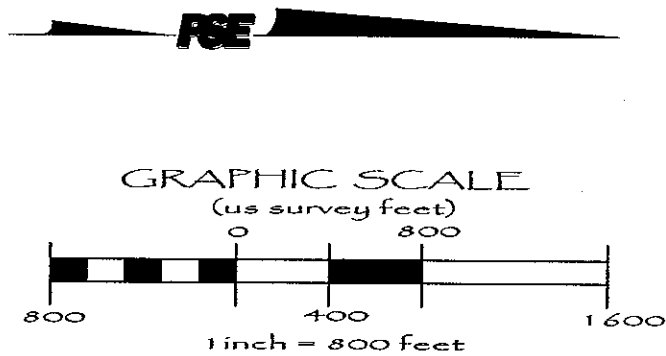
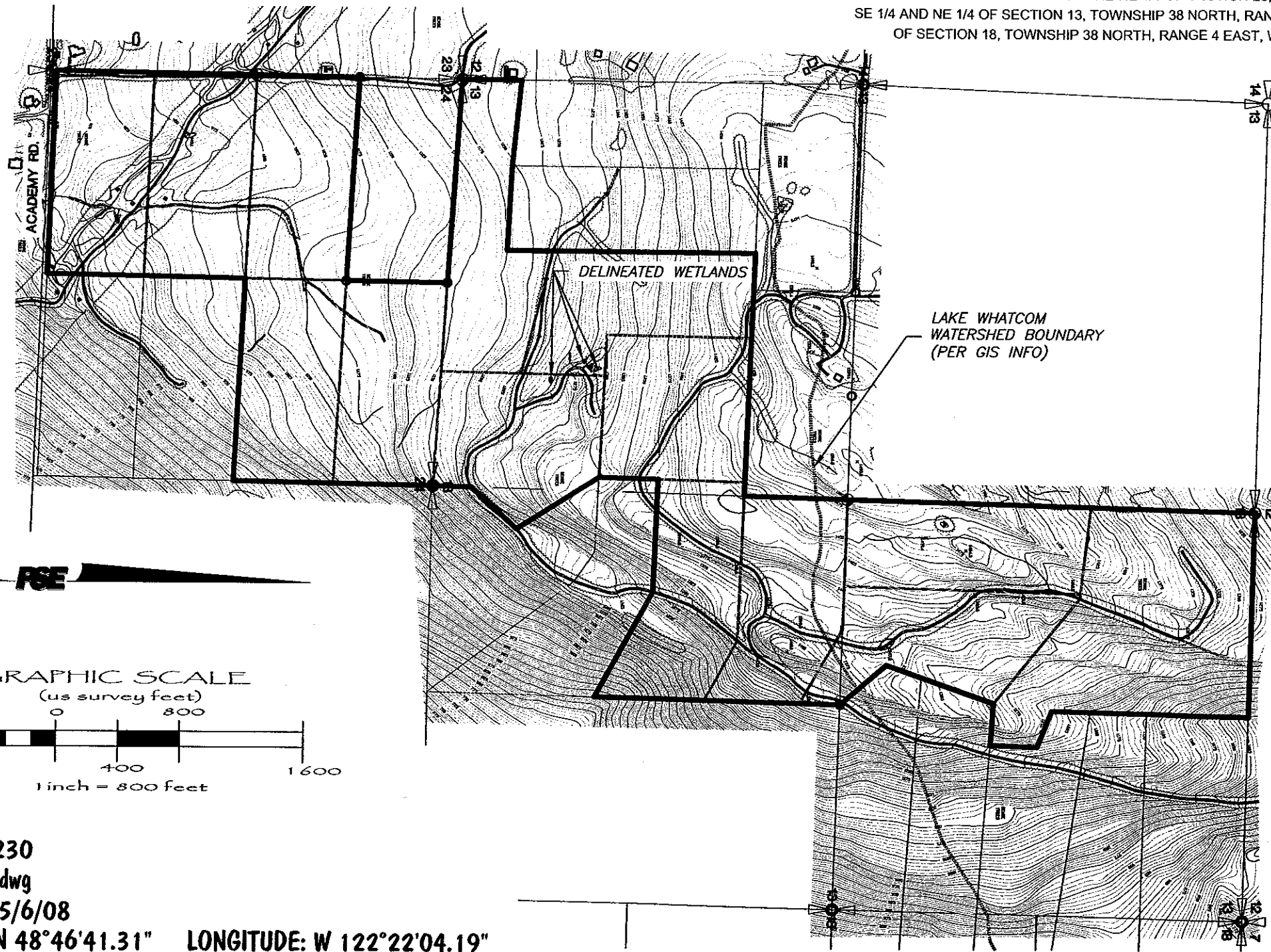
DRAFT



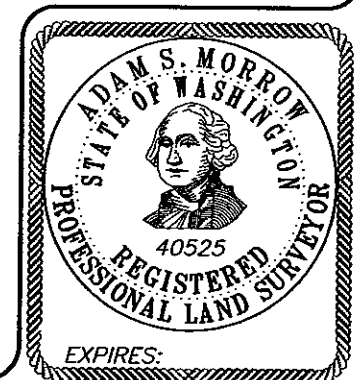


VINEYARD DEVELOPMENT EXISTING CONDITIONS

SITUATE IN A PORTION OF THE NE 1/4 OF SECTION 23, THE NW 1/4 OF SECTION 24, THE SW 1/4, SE 1/4 AND NE 1/4 OF SECTION 13, TOWNSHIP 38 NORTH, RANGE 3 EAST, AND THE NW 1/4 AND SW 1/4 OF SECTION 18, TOWNSHIP 38 NORTH, RANGE 4 EAST, W.M., WHATCOM COUNTY, WASHINGTON



DRAFT



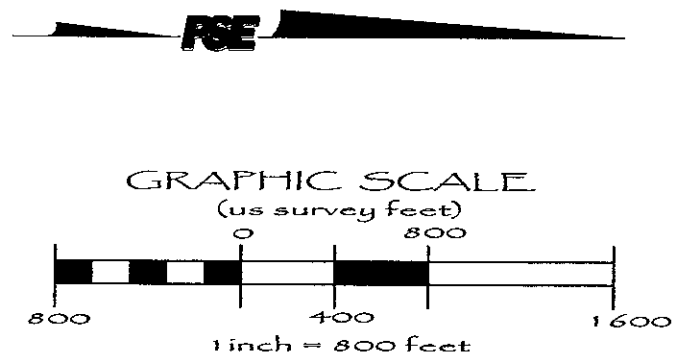
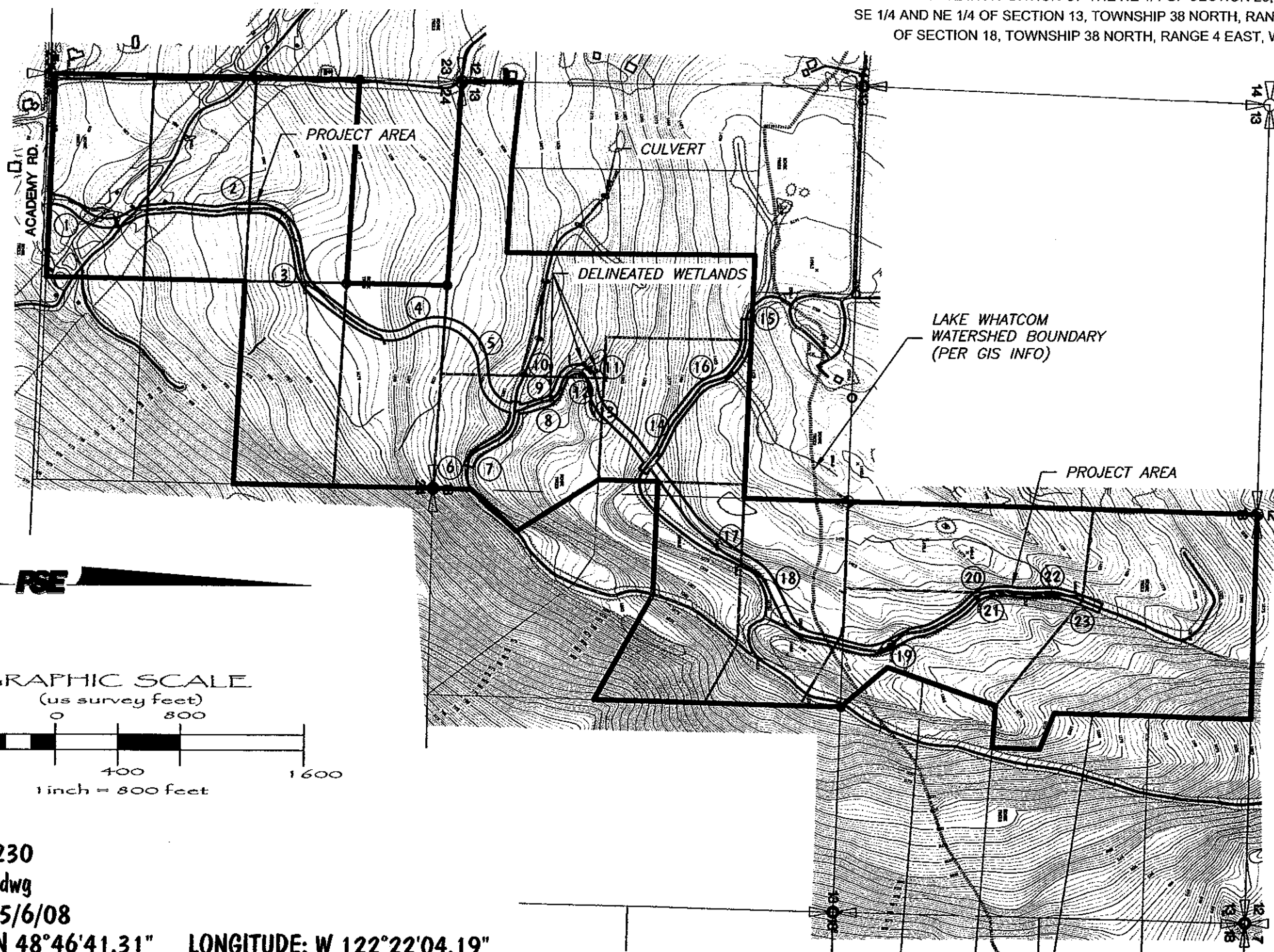
PACIFIC SURVEY & ENGINEERING INC
1812 CORNWALL AVE, BELLINGHAM, WA 98225 PHONE: 671.7387 FAX: 671.4685
EMAIL: pse@pseurvey.com www.pseurvey.com

FIGURE _ OF _
PSE PROJECT: 2005230
DWG: WETLAND_base.dwg
DRAWN: JVD DATE: 5/6/08
PROJECT LATITUDE: N 48°46'41.31" LONGITUDE: W 122°22'04.19"

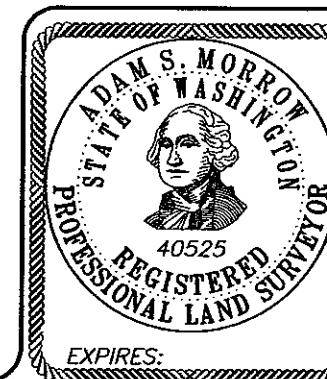


VINEYARD DEVELOPMENT OVERALL MAP WITH DATA PLOTS

SITUATE IN A PORTION OF THE NE 1/4 OF SECTION 23, THE NW1/4 OF SECTION 24, THE SW 1/4, SE 1/4 AND NE 1/4 OF SECTION 13, TOWNSHIP 38 NORTH, RANGE 3 EAST, AND THE NW 1/4 AND SW 1/4 OF SECTION 18, TOWNSHIP 38 NORTH, RANGE 4 EAST, W.M., WHATCOM COUNTY, WASHINGTON



DRAFT

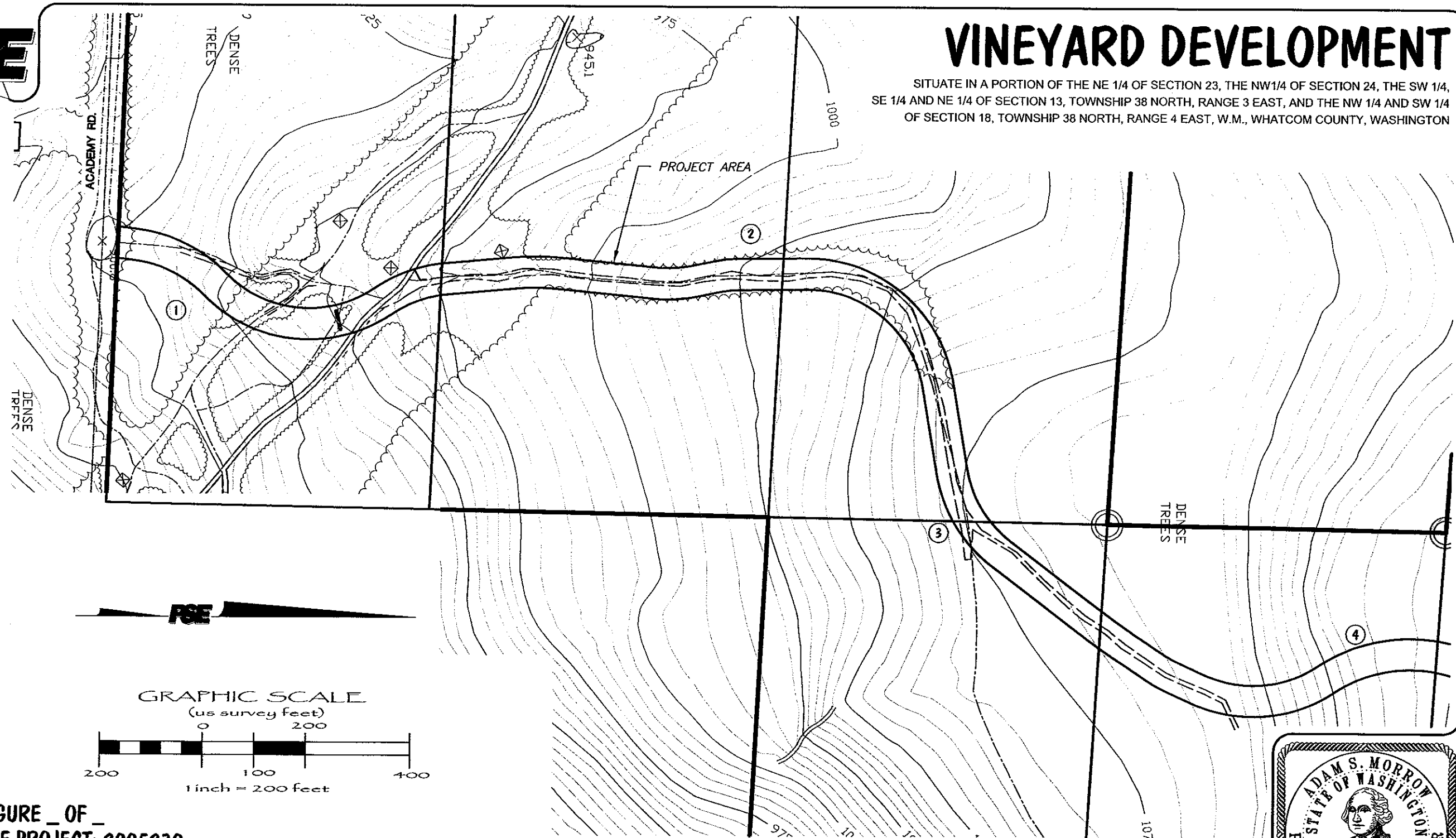


PACIFIC SURVEY & ENGINEERING INC
1812 CORNWALL AVE, BELLINGHAM, WA 98225 PHONE: 671.7387 FAX: 671.4685
EMAIL: pse@pseurvey.com www.pseurvey.com

FIGURE _ OF _
PSE PROJECT: 2005230
DWG: WETLAND_base.dwg
DRAWN: JVD DATE: 5/6/08
PROJECT LATITUDE: N 48°46'41.31" LONGITUDE: W 122°22'04.19"



PACIFIC SURVEY & ENGINEERING INC
1812 CORNWALL AVE, BELLINGHAM, WA 98225 PHONE: 671.7387 FAX: 671.4685
EMAIL: pse@pseurvey.com WWW.pseurvey.com



VINEYARD DEVELOPMENT

SITUATE IN A PORTION OF THE NE 1/4 OF SECTION 23, THE NW 1/4 OF SECTION 24, THE SW 1/4, SE 1/4 AND NE 1/4 OF SECTION 13, TOWNSHIP 38 NORTH, RANGE 3 EAST, AND THE NW 1/4 AND SW 1/4 OF SECTION 18, TOWNSHIP 38 NORTH, RANGE 4 EAST, W.M., WHATCOM COUNTY, WASHINGTON

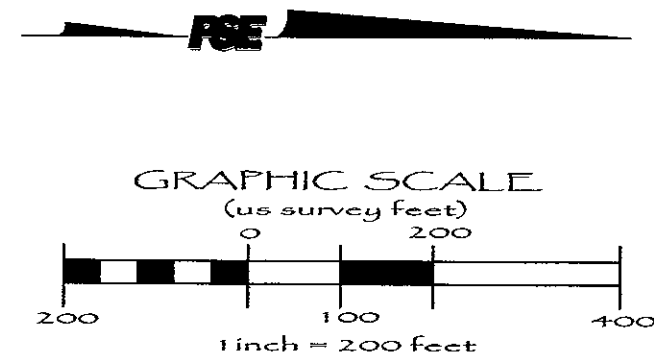
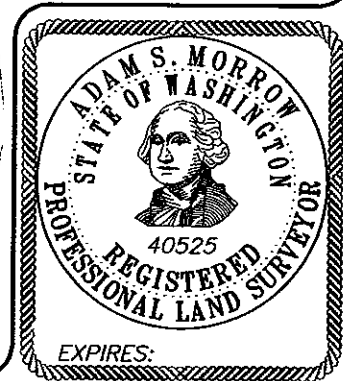


FIGURE _ OF _
PSE PROJECT: 2005230
DWG: WETLAND_base.dwg
DRAWN: JVD DATE: 5/6/08
PROJECT LATITUDE: N 48°46'41.31" LONGITUDE: W 122°22'04.19"



DRAFT

DRAFT

VINEYARD DEVELOPMENT

SITUATE IN A PORTION OF THE NE 1/4 OF SECTION 23, THE NW1/4 OF SECTION 24, THE SW 1/4, SE 1/4 AND NE 1/4 OF SECTION 13, TOWNSHIP 38 NORTH, RANGE 3 EAST, AND THE NW 1/4 AND SW 1/4 OF SECTION 18, TOWNSHIP 38 NORTH, RANGE 4 EAST, W.M., WHATCOM COUNTY, WASHINGTON

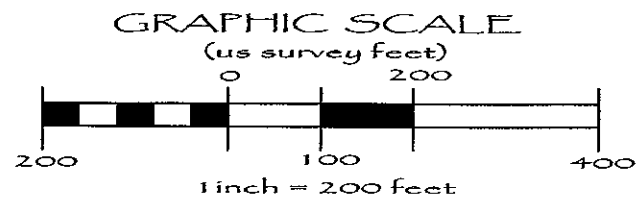
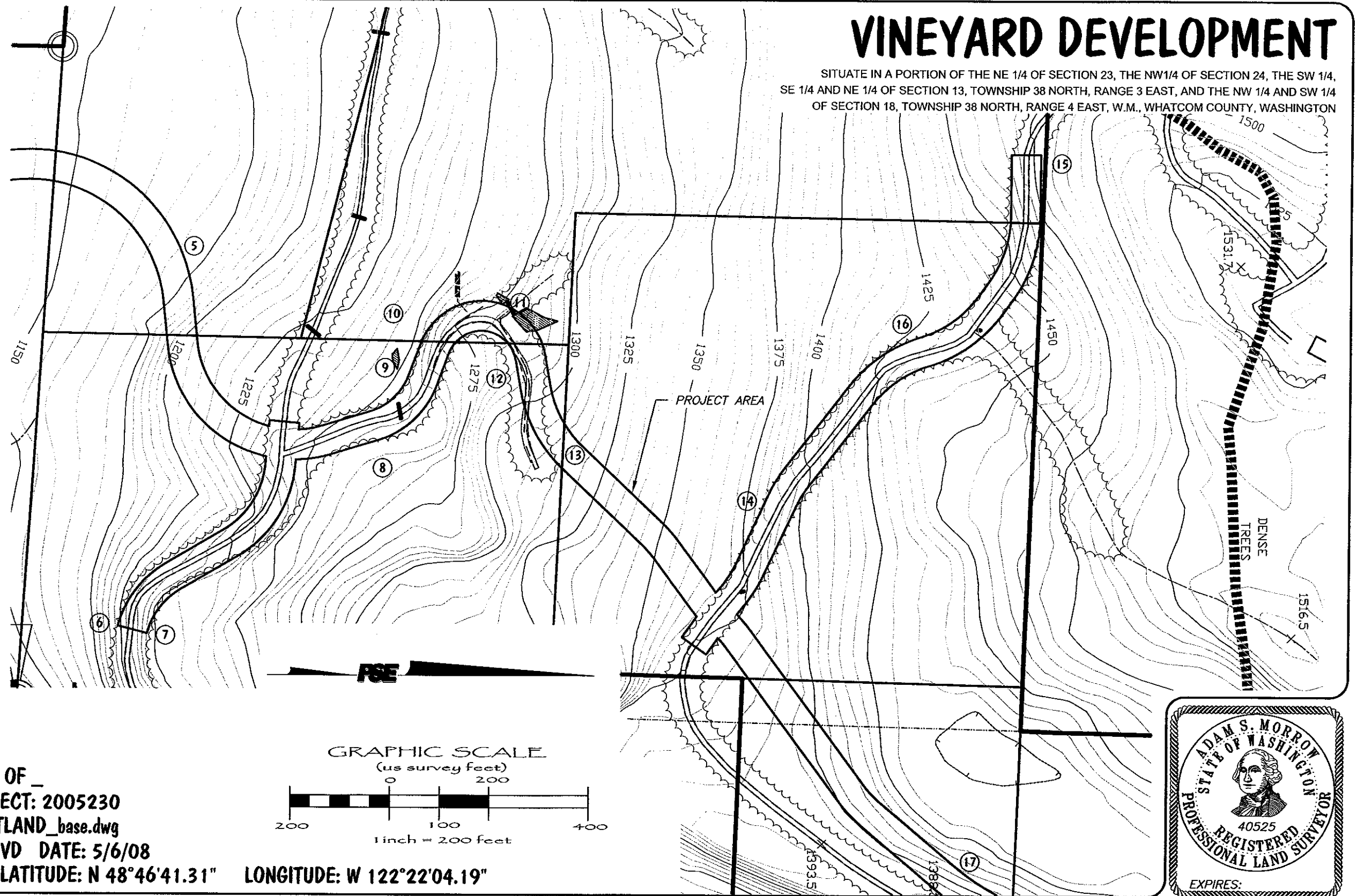
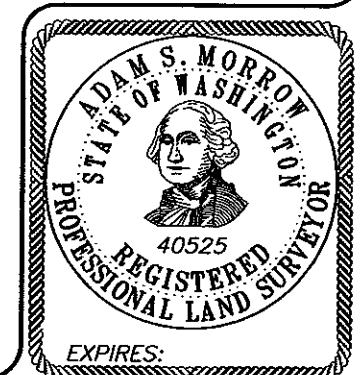


FIGURE _ OF _
 PSE PROJECT: 2005230
 DWG: WETLAND_base.dwg
 DRAWN: JVD DATE: 5/6/08
 PROJECT LATITUDE: N 48°46'41.31" LONGITUDE: W 122°22'04.19"



PACIFIC SURVEY & ENGINEERING INC
 1812 CORNWALL AVE, BELLINGHAM, WA 98225 PHONE: 671.7387 FAX: 671.4685
 EMAIL: pse@pseurvey.com WWW.PSESURVEY.COM

DRAFT



VINEYARD DEVELOPMENT

SITUATE IN A PORTION OF THE NE 1/4 OF SECTION 23, THE NW1/4 OF SECTION 24, THE SW 1/4, SE 1/4 AND NE 1/4 OF SECTION 13, TOWNSHIP 38 NORTH, RANGE 3 EAST, AND THE NW 1/4 AND SW 1/4 OF SECTION 18, TOWNSHIP 38 NORTH, RANGE 4 EAST, W.M., WHATCOM COUNTY, WASHINGTON

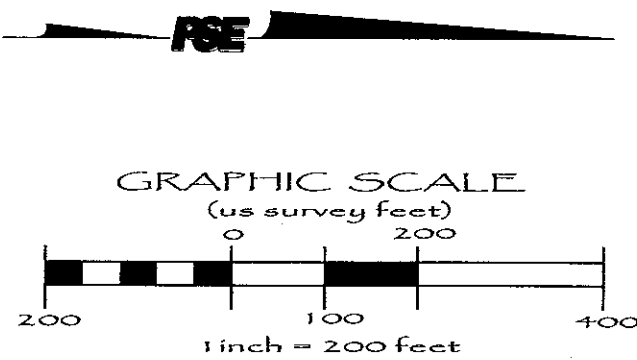
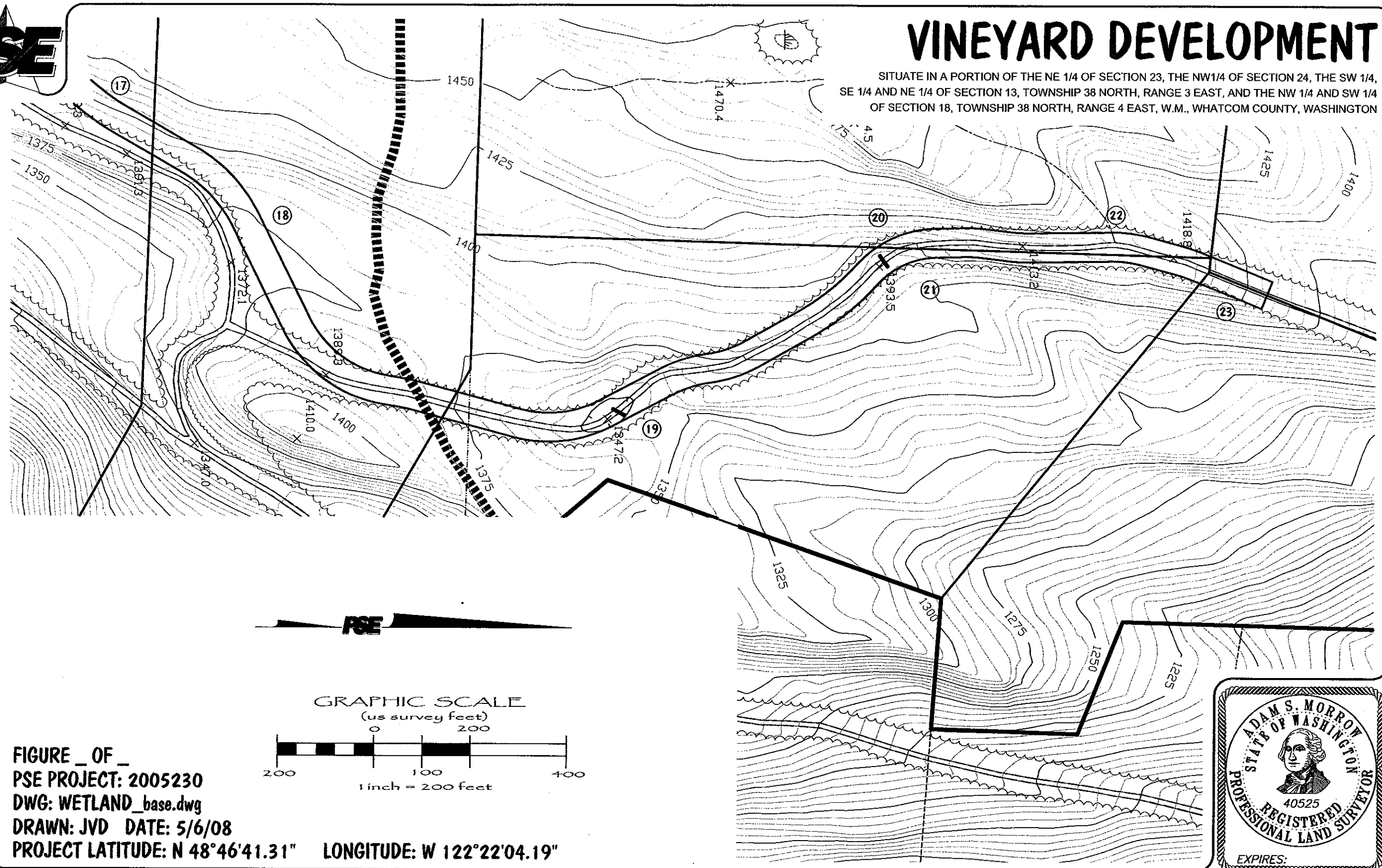
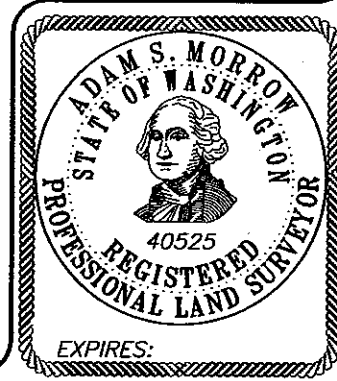


FIGURE _ OF _
PSE PROJECT: 2005230
DWG: WETLAND_base.dwg
DRAWN: JVD DATE: 5/6/08
PROJECT LATITUDE: N 48°46'41.31" LONGITUDE: W 122°22'04.19"

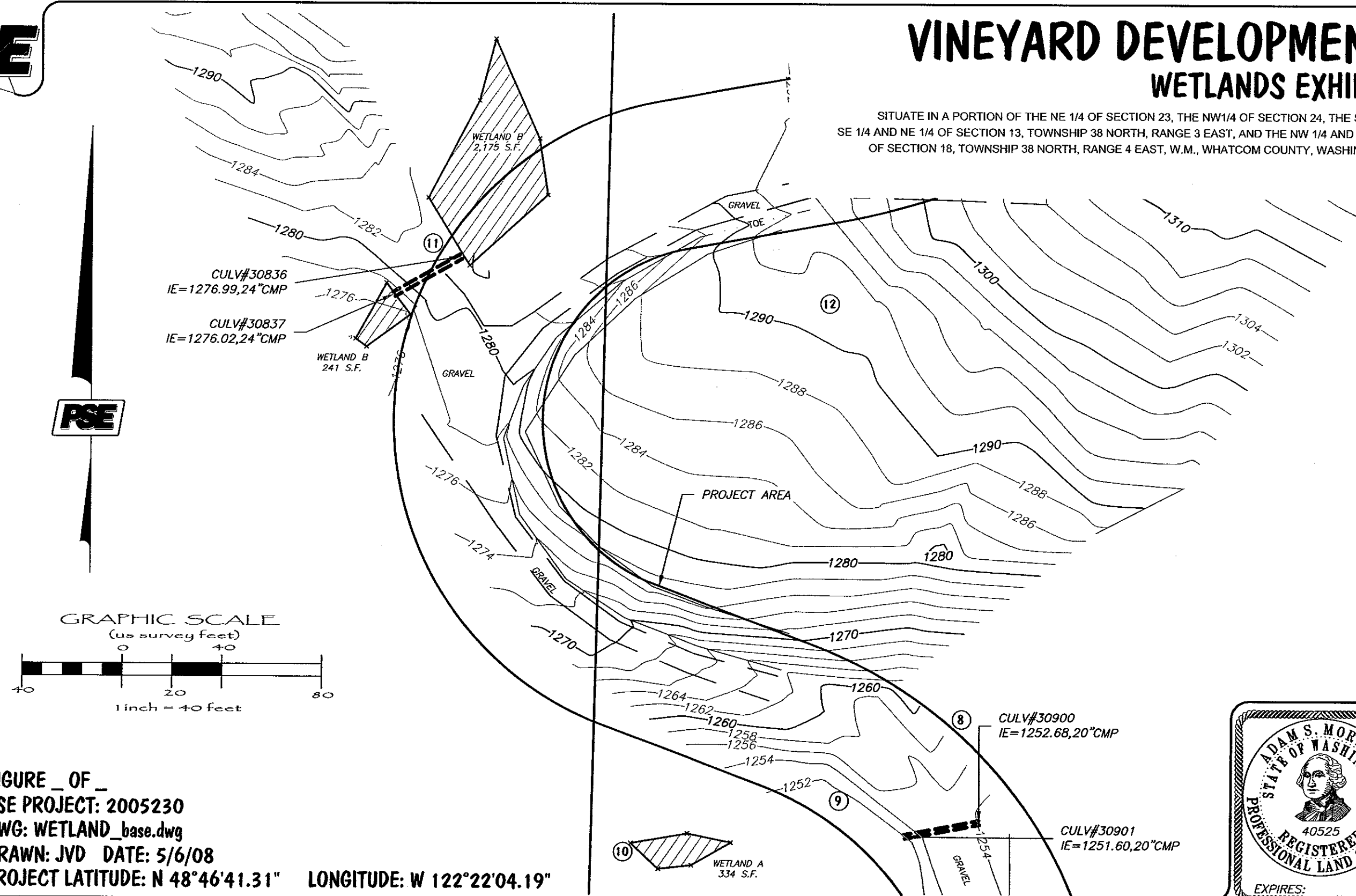


PACIFIC SURVEY & ENGINEERING INC
1812 CORNWALL AVE, BELLINGHAM, WA 98225 PHONE: 671.7387 FAX: 671.4685
EMAIL: pse@pseurvey.com WWW.PSESURVEY.COM

DRAFT

VINEYARD DEVELOPMENT WETLANDS EXHIBIT

SITUATE IN A PORTION OF THE NE 1/4 OF SECTION 23, THE NW1/4 OF SECTION 24, THE SW 1/4, SE 1/4 AND NE 1/4 OF SECTION 13, TOWNSHIP 38 NORTH, RANGE 3 EAST, AND THE NW 1/4 AND SW 1/4 OF SECTION 18, TOWNSHIP 38 NORTH, RANGE 4 EAST, W.M., WHATCOM COUNTY, WASHINGTON



PACIFIC SURVEY & ENGINEERING INC
1812 CORNWALL AVE, BELLINGHAM, WA 98225 PHONE: 671.7387 FAX: 671.4685
EMAIL: pse@pseurvey.com WWW.PSESURVEY.COM

FIGURE OF _
PSE PROJECT: 2005230
DWG: WETLAND_base.dwg
DRAWN: JVD DATE: 5/6/08
PROJECT LATITUDE: N 48°46'41.31" LONGITUDE: W 122°22'04.19"

